
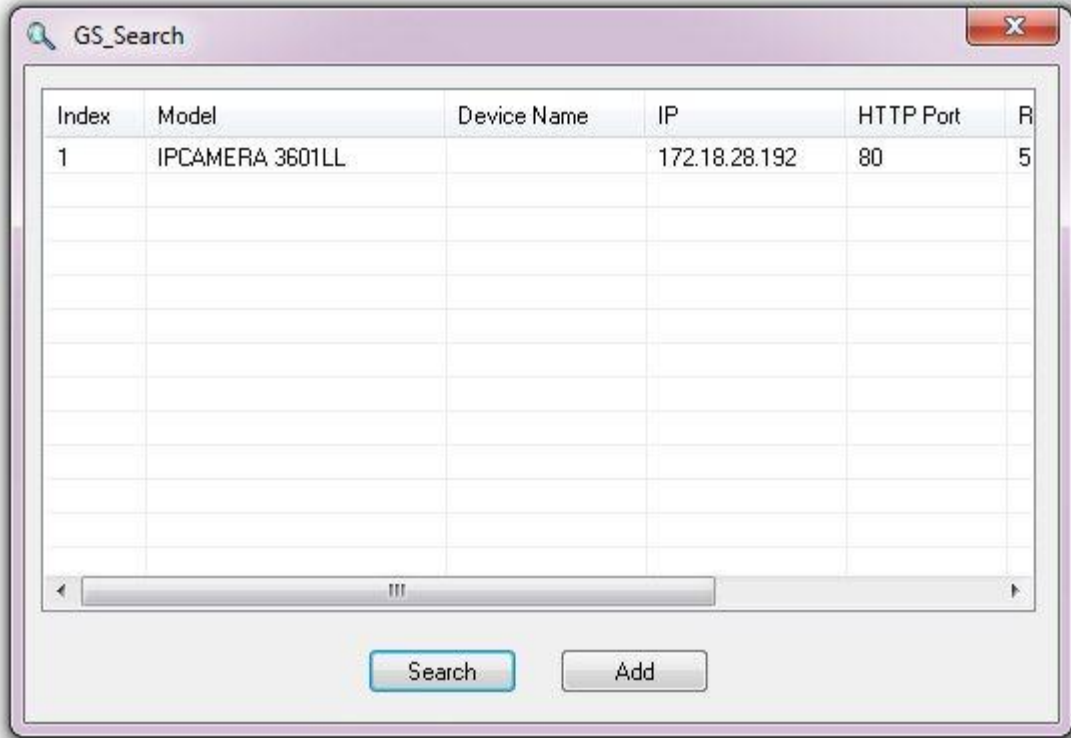


This program will capture the IP address of Grandstream products.

1. Run the Grandstream GS_Search tool
2. Click on  button in order to begin device detection
3. The detected devices will appear in the Output field



4. Start Internet Explorer on your computer.
5. Enter device IP in the address bar of the browser.
6. Enter the administrator user name and password to access the Web Configuration Interface